

MT-100-250-D2D1
 MT-300-450-D2D1
 MT-500-650-D2D1

MT-100-250-D2D1
 MT-300-450-D2D1
 MT-500-650-D2D1



DALI Constant Current Driver

Special for magnetic & linear lamp



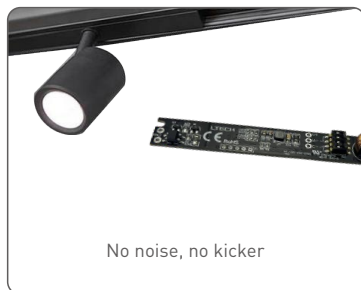
- No input polarity.
- DC to DC constant current output.
- DALI 2.0 protocol.
- Ultra-small size , suitable for STUCCHI standard housings.
- Magnetic installation is quiet without high-frequency sound.
- Smooth dimming curves without kicker.
- Short circuit, overload and anti-reverse protection.



Flicker-free
 IEEE 1789



RoHS



Technical Specs

| MODEL | | MT-100-250-D2D1 | MT-300-450-D2D1 | MT-500-650-D2D1 |
|-------------|--------------------------------|---|--------------------------|---------------------------|
| OUTPUT | Output Voltage | 9-45Vdc | 9-42Vdc | 9-39Vdc |
| | Output Voltage Range | 100-250mA | 300-450mA | 500-650mA |
| | Output Power | 0.9W-11.5W default 9W | 2.7W-18.9W default 16.2W | 4.5W-25.35W default 23.4W |
| | Current Accuracy | +15mA/-25mA | +15mA/-25mA | +5% |
| | Dimming Range | 0-100% , down to 0.1% | 0-100% , down to 0.1% | 0-100% , down to 0.1% |
| | Channel | 2 | 2 | 2 |
| INPUT | Dimming Interface | DALI | | |
| | Input Voltage | 48Vdc±5% (No polarity) | | |
| | Input Current | <0.28A | <0.57A | <0.57A |
| | Efficiency(Typ) | ≥87% | ≥87% | ≥87% |
| | Standby Power | ≤0.5W | ≤0.5W | ≤0.5W |
| ENVIRONMENT | Working Temperature | ta: -30~55°C tc: 87°C | | |
| | Working Humidity | 20~95%RH, non-condensing | | |
| | Storage Temperature | -40~80°C, 10~95%RH | | |
| PROTECTION | Overload Protection | The load voltage is out of range, the current drops until the power is turned on again. | | |
| | Short Circuit Protection | Close output and automatically recover once the fault is removed. | | |
| | No-load Protection | The product does not be damaged. | | |
| | Hot Plug | Support electric plug plug. | | |
| | Input Anti -reverse Protection | No input polarity , able to output normally. | | |
| OTHERS | Dimensions | 125×14×9.5mm (L×W×H) | | |
| | Weight(G.W.) | 12.5g±2g | | |
| | Carton Size | 370×290×190mm (L×W×H) ,240pcs/ctn 4.4kg±5%ctn | | |

Output Current Selection

* Please select the current through the DIP switch on the circuit board when the power is off.



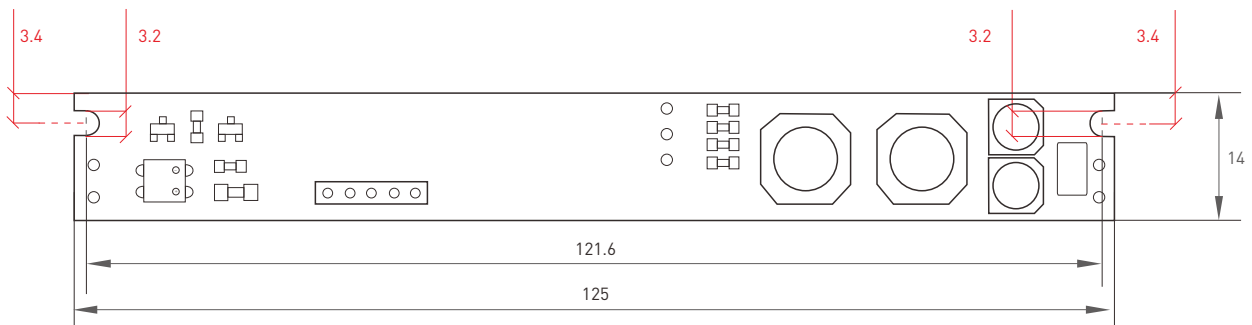
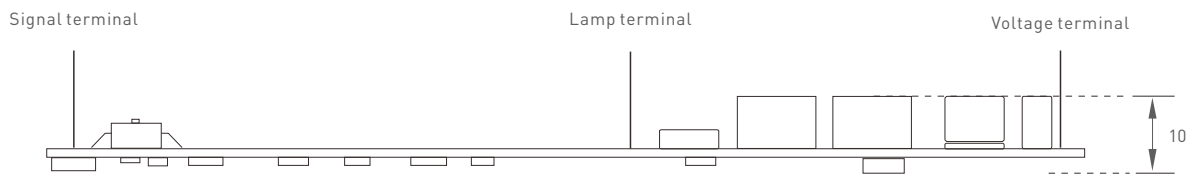
| DIP Switch | | ↓ ↓ ↓ ↓ | ↓ ↑ ↑ ↑ | ↑ ↓ ↑ ↓ | ↑ ↑ ↑ ↑ | ON OFF |
|-----------------|----------------|-----------|-------------|---------|--------------|------------|
| MT-100-250-D2D1 | Output Current | 100mA | 150mA | 200mA | 250mA | |
| | Output Voltage | 9-45Vdc | 9-45Vdc | 9-45Vdc | 9-45Vdc | |
| | Output Power | 0.9W-4.5W | 1.35W-6.75W | 1.8W-9W | 2.25W-11.25W | |

| DIP Switch | | ↓ ↓ ↓ ↓ | ↓ ↑ ↑ ↑ | ↑ ↓ ↑ ↓ | ↑ ↑ ↑ ↑ | ON OFF |
|-----------------|----------------|------------|-------------|------------|-------------|------------|
| MT-300-450-D2D1 | Output Current | 300mA | 350mA | 400mA | 450mA | |
| | Output Voltage | 9-42Vdc | 9-42Vdc | 9-42Vdc | 9-42Vdc | |
| | Output Power | 2.7W-12.6W | 3.15W-14.7W | 3.6W-16.8W | 4.05W-18.9W | |

| DIP Switch | | ↓ ↓ ↓ ↓ | ↓ ↑ ↑ ↑ | ↑ ↓ ↑ ↓ | ↑ ↑ ↑ ↑ | ON OFF |
|-----------------|----------------|------------|--------------|------------|--------------|------------|
| MT-500-650-D2D1 | Output Current | 500mA | 550mA | 600mA | 650mA | |
| | Output Voltage | 9-39Vdc | 9-39Vdc | 9-39Vdc | 9-39Vdc | |
| | Output Power | 4.5W-19.5W | 4.95W-21.45W | 5.4W-23.4W | 5.85W-25.35W | |

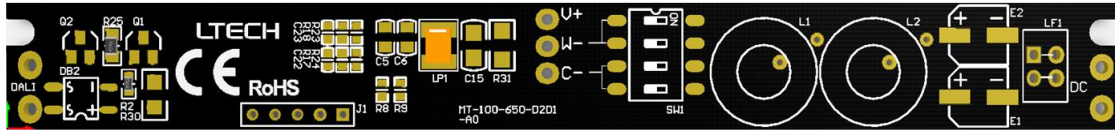
Dimensions

Unit:mm



Terminal description

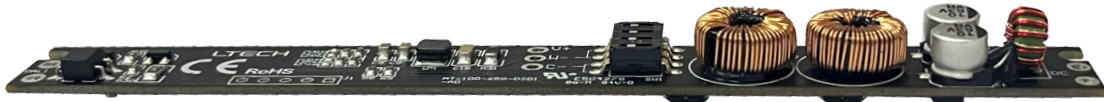
PCB board



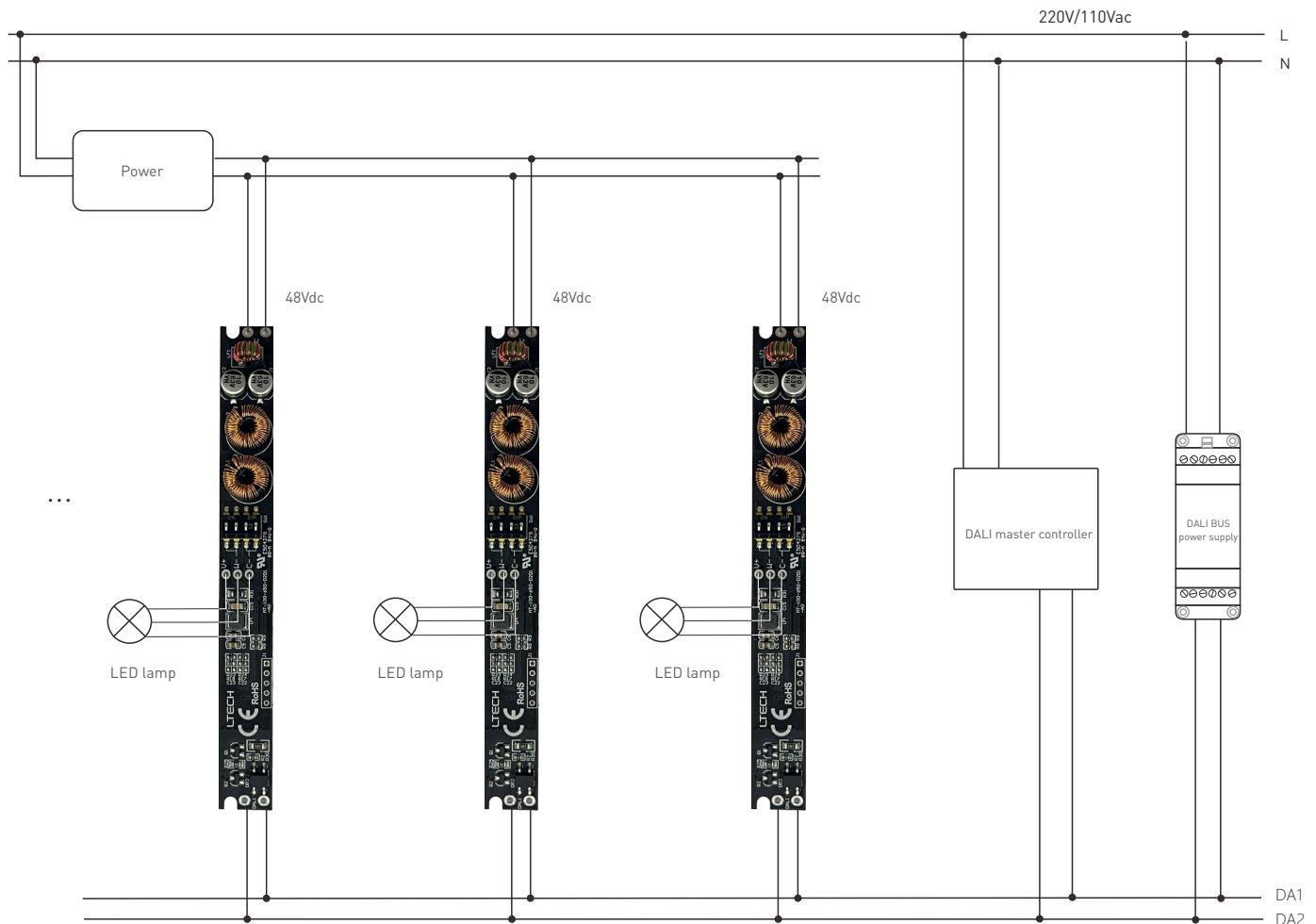
Main view



Side view



Wiring Diagram



Attentions

- Products shall be installed by qualified professionals.
 - LTECH products are non-waterproof (special models excepted). Please avoid the sun and rain. When installed outdoors, please ensure it is mounted in a water proof enclosure.
 - Good heat dissipation will extend the working life of products. Please ensure good ventilation.
 - Please check if the working voltage used complies with the parameter requirements of products.
 - The diameter of wire used must be able to load the light fixtures you connect and ensure the firm wiring.
 - Before you power on products, please make sure all the wiring is correct in case of incorrect connection that causes damage to light fixtures.
 - If a fault occurs, please do not attempt to fix products by yourself. If you have any question, please contact your suppliers.
- * This manual is subject to changes without further notice. Product functions depend on the goods. Please feel free to contact our official distributors if you have any question.

Warranty Agreement

- Warranty periods from the date of delivery : 5 years.
- Free repair or replacement services for quality problems are provided within warranty periods.

Warranty exclusions below:

- Beyond warranty periods.
 - Any artificial damage caused by high voltage, overload, or improper operations.
 - Products with severe physical damage.
 - Damage caused by natural disasters and force majeure.
 - Warranty labels and barcodes have been damaged.
 - No any contract signed by LTECH.
1. Repair or replacement provided is the only remedy for customers. LTECH is not liable for any incidental or consequential damage unless it is within the law.
 2. LTECH has the right to amend or adjust the terms of this warranty, and release in written form shall prevail.

Update Log

| Version | Updated Time | Update Content | Updated by |
|---------|--------------|-------------------|--------------|
| A0 | 2023.04.13 | Original version. | Yang Weiling |